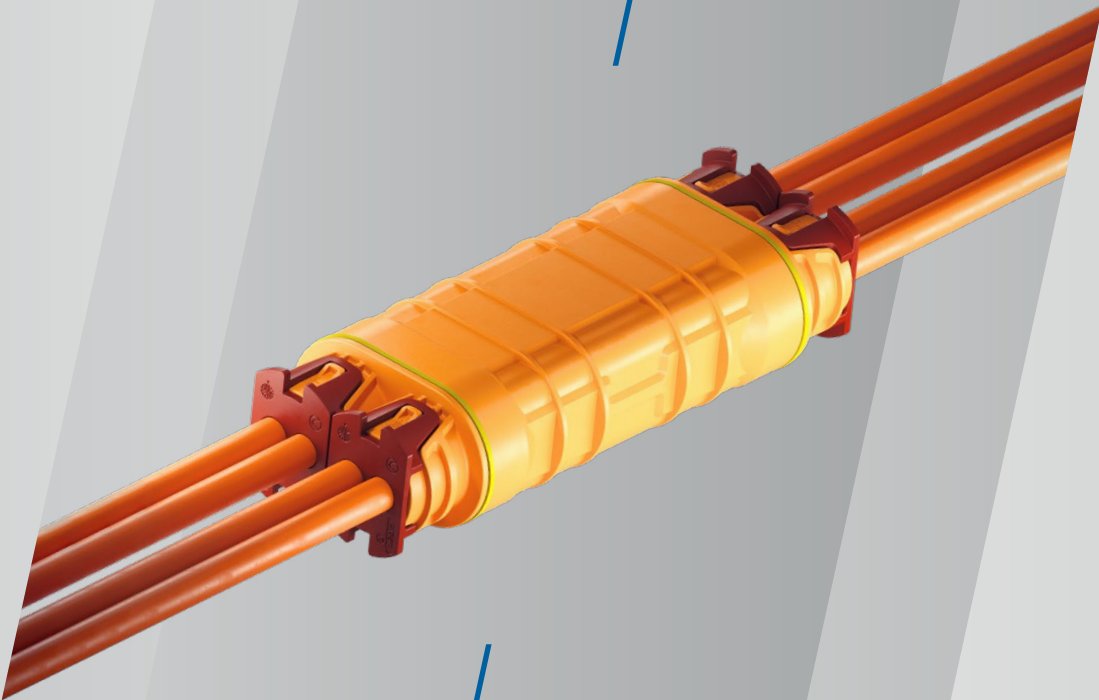


HPS Distributor

Compact Power Distributor
for High Current Loads



HIRSCHMANN
AUTOMOTIVE

EFFICIENT POWER DISTRIBUTION FOR THE EXPANSION OF IN-VEHICLE HIGH-VOLTAGE NETWORKS

The electrification of the mobility sector requires, among other things, an efficient connection of current-carrying lines in high-voltage vehicle electrical systems. For example, it becomes increasingly necessary to distribute power to two HV units. With our HPS Distributors, this can be achieved safely.

The product design of our power distributors impresses with its extremely compact construction and its high scalability – due the use of standard components, we can cover a wide range of cross-sections.



Characteristics:

- compliant with several automotive test specifications
- watertight according to IP6K9K
- 360° shielded connection
- different cable cross section possible
- compact design
- high current load at high ambient temperatures

TECHNICAL PRODUCT INFORMATION

CURRENT CLASS	current class 1 and 2 connector
APPLICATIONS	power distribution
OPERATING CONDITIONS	1,000 VDC
VOLTAGE CLASS	class B according ISO 6469-3:2011 60 VDC < U ≤ 1,000 VDC 25 VAC < U _{eff} ≤ 707 VAC (15-150 Hz)
AMBIENT CONDITION	-40° C to +140° C
MAXIMUM ALTITUDE	4,000 m
MAXIMUM CURRENT LOAD	88 A at 80° C (6.0 mm ²), see deratings product specification
IP-DEGREE OF PROTECTION	IPXXD (assembled)
WATERTIGHTNESS	IP6K9K, IPX8
EMC PERFORMANCE (6.0 MM ²)	until 30 MHz < 1 mΩ/m > 75 dB (10 kHz to 500 MHz) > 65 dB (500 MHz to 1,000 MHz)
SHIELDED AREA	360° circumferential
SHIELD CONTACT RESISTANCE	< 2,0 mΩ (total from sheathed cable until aggregate housing)
VIBRATION STRENGTH 2	according to LV214/215 - PG17 (without fixation point)
VIBRATION STRENGTH 3	according to LV214/215 - PG17 (first fixation point at < 200 mm)
VIBRATION STRENGTH 4	according to LV214/215 - PG17 (first fixation point at < 50 mm)

CONNECTION INFORMATION

CONNECTION	ultrasonic welding
------------	--------------------

CUSTOMER-SPECIFIC INFORMATION

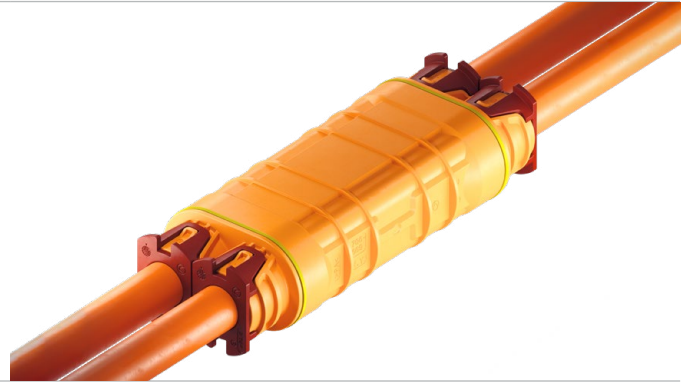
CABLE CROSS SECTION	4.0 mm ² , 6.0 mm ² as MCC and SCC solutions
---------------------	--

HPS DISTRIBUTOR PRODUCT VARIANTS

Y-DISTRIBUTOR

H-DISTRIBUTOR

MULTICORE CONNECTION



SINGLECORE CONNECTION



Higher cross sections can be developed on request.



**Tobias Natter is your Contact
for Individual Questions**

Global Product Manager High Voltage

🌐 +43 5522 307 1839

📞 +43 664 889 317 73

✉️ tobias.natter@hirschmann-automotive.com

SEEKING MORE DETAILED INFORMATION?
SCAN ME AND BROWSE THROUGH THE
PRODUCT CATALOGUE.



Hirschmann Automotive GmbH

Oberer Paspelsweg 6–8
6830 Rankweil, Austria

www.hirschmann-automotive.com
shop.hirschmann-automotive.com

